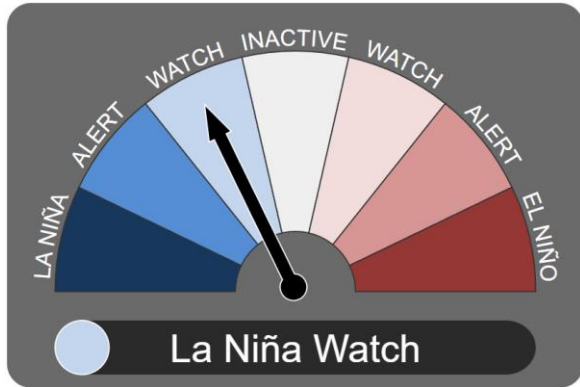


# June Climate Bulletin for Tourism

A monthly bulletin issued by the Vanuatu Meteorology & Geo-hazards Department that provides concise one-month outlook on climatic conditions over Vanuatu that local tourism operators and tourists can use for better decision-making.

## El Niño–Southern Oscillation (ENSO)



ENSO status is now in La Niña Watch. Indicators are within ENSO-neutral thresholds, but there are signs a La Niña may develop in the following months. Rainfall and temperatures are neither enhanced nor diminished during the Neutral phase.

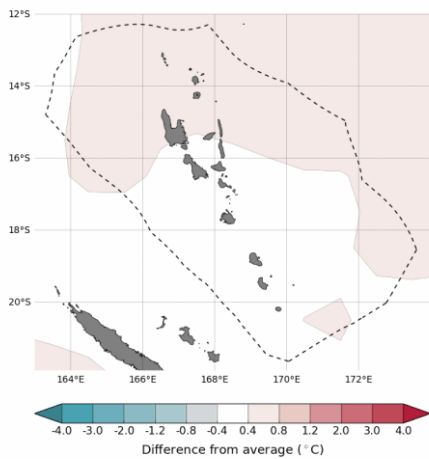
Stetas blong ENSO naoia hemi stap long La Niña Watch. Ol indiketa blong climate oli soem se ENSO hemi stap long nutrel, be l kat ol signs se wan La Niña bai l fom lo yia ya. Rainfol mo Tempreja l save ko antap or godwon plante long nutrel taim ya.

## Sea Surface Temperature Forecast

Sea surface temperature is expected to be 0.4-0.8°C warmer over Torba, and northern Sanma and Penama provinces. The rest of the country is expected to be near normal.

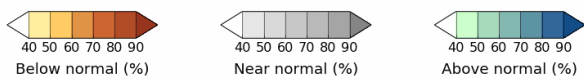
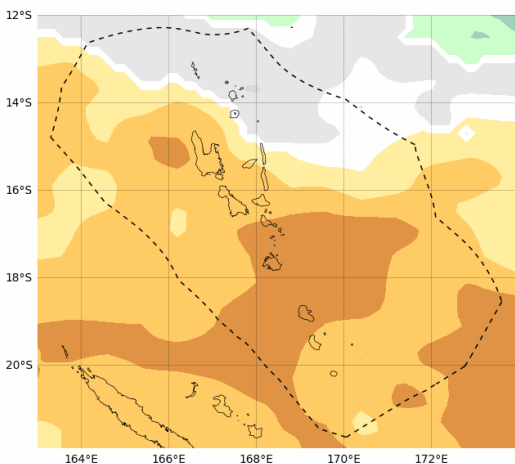
*Tempreja blong solwota hemi save kasem 0.4-0.8°C, be bambae l save wom mo lelepet long Toraba, Noth Sanma mo Penama Profins. Ol nara pat blong kaontri bambae oli kasem klosap long nomol*

Difference from average sea surface temperature forecast for June 2024



Base period: 1981-2018  
Model: ACCESS-S2  
© Commonwealth of Australia 2024. Australian Bureau of Meteorology  
Shapefile data extracted from Flanders Marine Institute (2019). Maritime Boundaries Geodatabase: Maritime Boundaries and Exclusive Economic Zones (200NM), version 11. Available online at <http://www.maritimerregions.org/>

Tercile rainfall probabilities for June 2024



Base period: 1981-2018  
Model: ACCESS-S2  
© Commonwealth of Australia 2024. Australian Bureau of Meteorology  
Shapefile data extracted from Flanders Marine Institute (2019). Maritime Boundaries Geodatabase: Maritime Boundaries and Exclusive Economic Zones (200NM), version 11. Available online at <http://www.maritimerregions.org/>

## Rainfall Outlook

Rainfall is predicted to be below normal for all provinces other than Torba province which is predicted to be near normal.

*Renfol bambae hemi save kasem below normal long efri Profinses, be Torba nomo hemi save kaesm klosap long ol nomol.*

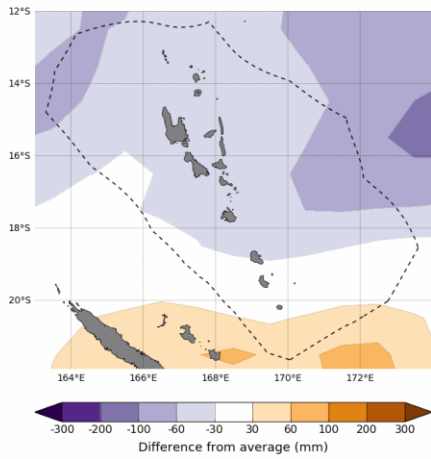
SUPPORTED BY:



Australian Government  
Bureau of Meteorology



Difference from average sea surface height forecast for June 2024



Base period: 1981-2018  
 Model: ACCESS-S2  
 © Commonwealth of Australia 2024, Australian Bureau of Meteorology  
 Datafile data extracted from Flanders Marine Institute (2019), Maritime Boundaries Geodatabase: Maritime Boundaries and Exclusive Economic Zones (2014M), version 11. Available online at <http://www.maritimeregion.org/>  
 Model run: 27/05/2024  
 Issued: 29/05/2024

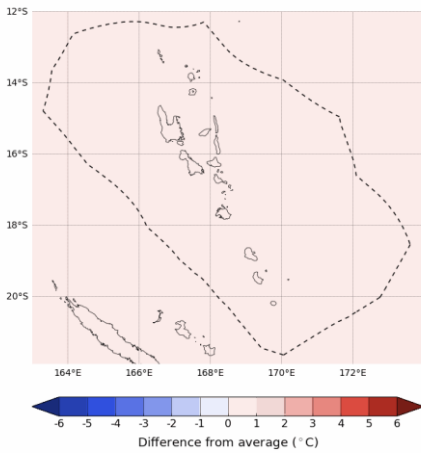
## Sea Level Forecast

Most of the country is expected to have lower than normal sea surface heights of up to 60mm. Tafea province is expected to have normal sea level heights.

Tafea Profins bambae I kasem klosap long ogeta nomol hae blong solwota. Wetem efri nara ples long Vanuatu, bae oli kasem hae blong 60mm we hemia i bilou long nomol level.

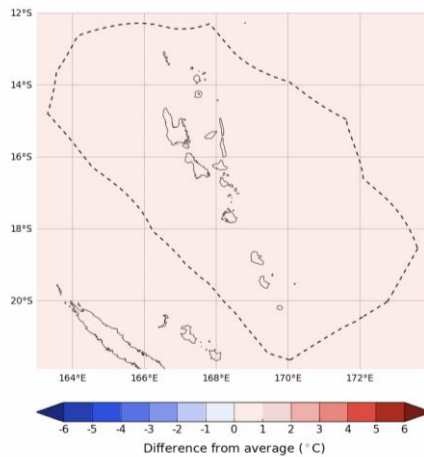
## Maximum and Minimum Temperature Outlook

Difference from average mean maximum temperature forecast for June 2024



Base period: 1981-2018  
 Model: ACCESS-S2  
 © Commonwealth of Australia 2024, Australian Bureau of Meteorology  
 Datafile data extracted from Flanders Marine Institute (2019), Maritime Boundaries Geodatabase: Maritime Boundaries and Exclusive Economic Zones (2014M), version 11. Available online at <http://www.maritimeregion.org/>  
 Model run: 27/05/2024  
 Issued: 29/05/2024

Difference from average mean minimum temperature forecast for June 2024



Base period: 1981-2018  
 Model: ACCESS-S2  
 © Commonwealth of Australia 2024, Australian Bureau of Meteorology  
 Datafile data extracted from Flanders Marine Institute (2019), Maritime Boundaries Geodatabase: Maritime Boundaries and Exclusive Economic Zones (2014M), version 11. Available online at <http://www.maritimeregion.org/>  
 Model run: 27/05/2024  
 Issued: 29/05/2024

Slightly above average (0-1°C) day-time temperatures are expected across the country this month.

- *Tempreja blong daytime long Vanuatu bae hemi hae lelepet long afarej (0-1°C) long manis*

Slightly above average (0-1°C) night-time temperatures are expected across the country this month.

- *Tempreja blong naet Long Vanuatu bae wom lelebet bitim nomol wetem wan diffrens blong 0-1°C long Mnis ya.*

## Tide Outlook for June

### Port Vila Harbour

Lowest Tide	Date	Time (VUT)	Highest Tide	Date	Time (VUT)
0.10m	7 Jun	12:28pm	1.48m	5 Jun	3:59am

### Luganville Harbour

Lowest Tide	Date	Time (VUT)	Highest Tide	Date	Time (VUT)
0.15m	7 Jun	11:43am	1.74m	6 Jun	3:59am

## Moon Phases for June

Fes Kwata	Ful Moon	Las Kwata	Niu Moon
14 June	22 June	29 June	6 June

SUPPORTED BY:



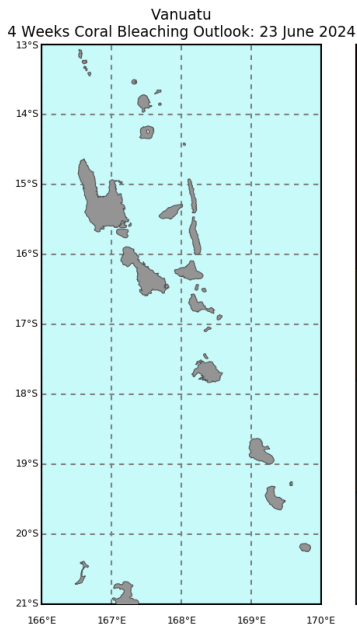
Australian Government  
 Bureau of Meteorology



SPREP  
 Secretariat of the Pacific Regional  
 Environment Programme



GREEN  
 CLIMATE  
 FUND



©Commonwealth of Australia 2024  
Australian Bureau of Meteorology, COSPPac

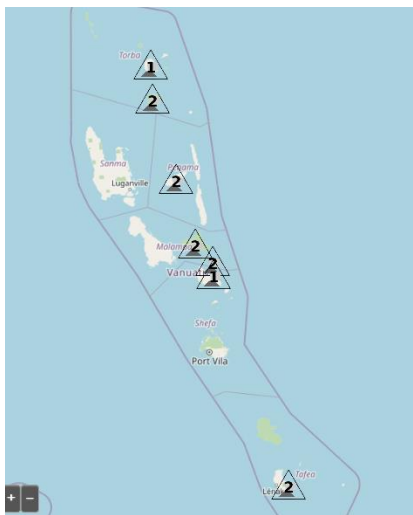
NOAA Coral Reef Watch

## Coral Bleaching Outlook

The whole country is at a No Stress level for coral bleaching.

*Full kaontri I stap long No Stress level blong korel bleaching (saens blong korel I wik or i ded).*

## Volcanic Alert Level



Vanuatu Volcanic Activity Summary	
Volcanoes	Current Alert Level
Yasur (Tanna)	2
Lopevi (Lopevi)	2
Benbow and Marum (Ambrym)	2
Manaro Voui (Ambae)	2
Mount Garek (Gaua)	2
Suretamatai (Vanua Lava)	1
East Epi	1

Title	Level of Alert
Very Large Eruption	5
Moderate Eruption	4
Minor Eruption	3
Major Unrest	2
Signs of Volcanic Unrest	1
Normal	0

For the latest Volcanic Alert Bulletin, visit:

<https://www.vmgd.gov.vu/vmgd/index.php/geohazards/volcano/volcano-info/current-volcanic-activity>

### Bulletin Highlights for June 2024

ENSO:	La Niña Watch	Max Temp:	↑
SST:	↑	Min Temp:	↑
Rainfall:	↓	Coral Bleaching:	↓
Sea Level:	↓	Volcanos:	–

SUPPORTED BY:



Australian Government  
Bureau of Meteorology



SPREP  
Secretariat of the Pacific Regional  
Environment Programme



GREEN  
CLIMATE  
FUND

			<i>Recommended Actions</i>	
			<b>Tourism Operators</b>	<b>Tourists</b>
	<b>R a i n f a l</b>	<i>Below normal</i>	Use water wisely (e.g., watering lawn/ gardens during cool morning/ evening hours)  Provide tourists with resource on water saving behaviour  Heavily mulch flower beds to reduce evaporation  Desalination plants  Avoid use of fire	Use water wisely (use water taps responsibly, reduce shower times)  Travel with reusable water bottle and filter  Support eco-tourism initiatives with a water conservation focus  Participate in activities with less reliance on water (e.g., go bush hiking instead of swimming)
		<i>Above normal</i>	Save enough water for consumption  Increase water activities  Increase shelter to accommodate rain day activities	Participate in indoor activities  Participate in water-based activities
<b>C l i m a t e v a r i a b l e</b>	<b>T e m p e r a t u r e</b>	<i>Above normal</i>	Build low huts near beaches to cool off  Encourage sun safe behaviour for tourists (sunscreen, staying in shade, etc.)  Do not remove branches from trees nearby  Heavily mulch flower beds  Provide shade tents and cooling stations  Use structural or mechanical aid (e.g., umbrellas or wind breaks)  Avoid areas of unfavourable weather conditions (e.g., move from sun to shade)	Apply SPF30+ sunscreen every 2 hours  Adjust outdoor activities to avoid thermal stress  Stay in the shade where possible  Keep hydrated  Reduce excess movement  Wear a shirt, hat, and sunglasses
<b>C o r a l B l e a c h i n g L e v e l</b>	<i>Above normal</i>	Reduce stormwater and fertilizer runoff  Avoid using herbicides and pesticides  Work with government to move towards renewable energy  For operators nearby coral, provide extensive education to tourists on how to avoid damaging coral reefs  When anchoring boats, avoid anchoring near places with coral reefs  Tour boats to avoid releasing grey-water discharge or other water pollutants that can be damaging to marine environment	Do not litter in the marine environment  If participating in snorkelling or other water activities nearby coral reefs, take care to not damage coral reefs by stepping on, hitting, or touching corals  Ensure sunscreen you use is safe for marine life	

**For more info, contact us:**

**VMGD:** Free Toll (116) Telephone (+678 23866) Email ([climate@meteo.gov.vu](mailto:climate@meteo.gov.vu))  
**Tourism office:** Telephone (+678 33400) Email ([tourism@vanuatu.gov.vu](mailto:tourism@vanuatu.gov.vu))

SUPPORTED BY:



Australian Government  
Bureau of Meteorology



SPREP  
Secretariat of the Pacific Regional  
Environment Programme



GREEN  
CLIMATE  
FUND