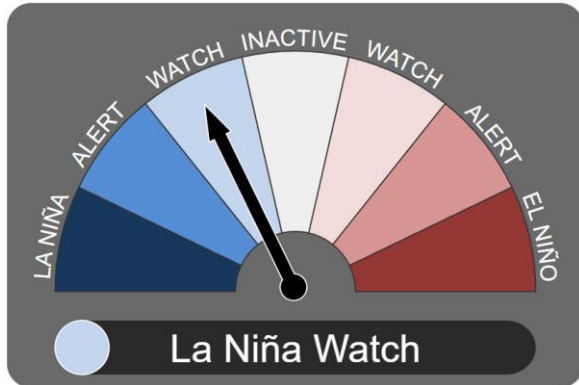


July Climate Bulletin for Tourism

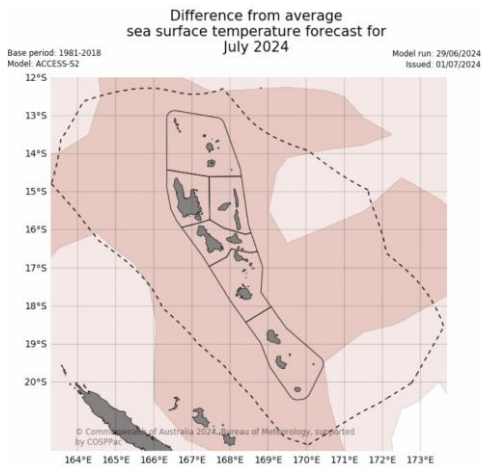
A monthly bulletin issued by the Vanuatu Meteorology & Geo-hazards Department that provides concise one-month outlook on climatic conditions over Vanuatu that local tourism operators and tourists can use for better decision-making.



El Niño–Southern Oscillation (ENSO)

ENSO status is now in La Niña Watch. Indicators are within ENSO-neutral thresholds, but there are signs a La Niña may develop in the following months. Rainfall and temperatures are neither enhanced nor diminished during the Neutral phase.

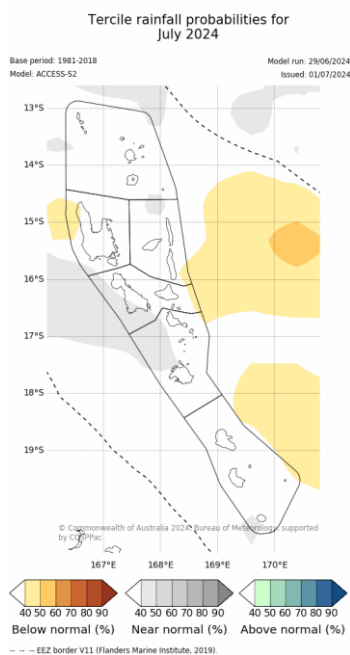
ENSO hemi stap La Nina Watch, ol klaemet indiketa I soem se ENSO hemi Nutrel, be I kat saen se La Nina I save fom long ol manis we I kam. Rain mo Tempreja I save jenis long taim blong nutrel.



Sea Surface Temperature Forecast

Sea surface temperature is expected to be 0.8-1.2°C warmer over the whole country.

Tempreja blong solwota hemi save kasem 0.8-0.1.2°C bitim nomol hemia long ful kaontri.



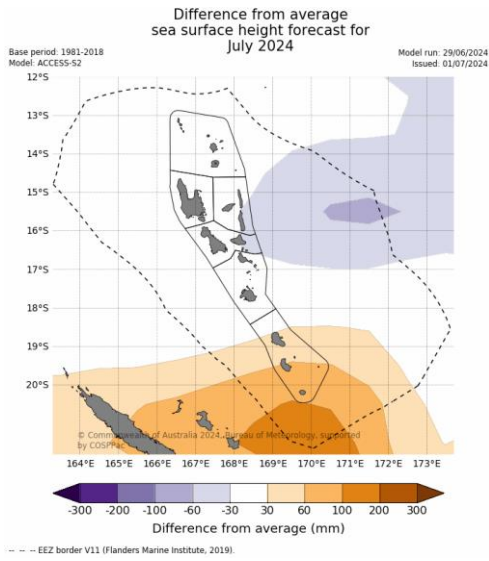
Rainfall Outlook

Rainfall is predicted to be near normal for most of the country.

Renfol bambae hemi klosap long nomol, hemia lo efri aelan blong Vanutu.

SUPPORTED BY:



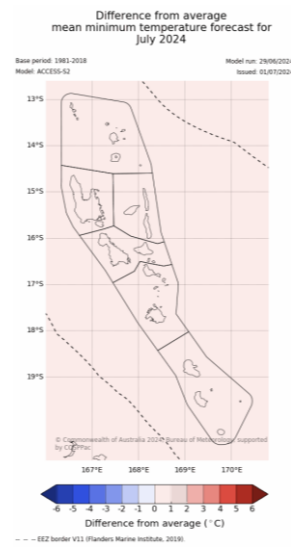
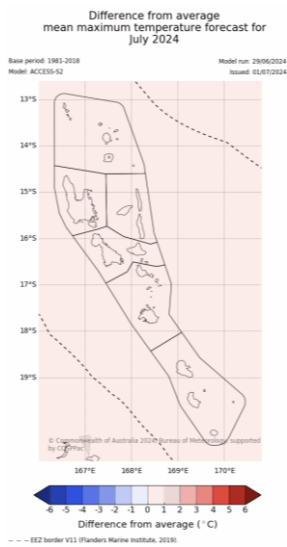


Sea Level Forecast

Tafea province is expected to have 30-100mm higher sea surface heights than normal. Eastern islands of Penama and Malampa provinces are expected to be 30-60mm lower. The rest of the country is forecasted to have normal sea surface heights.

Tafea Profins i save kasem 30-100mm level blong solwtoa we l bitim nomol level. Is saed blong Penama l save kasem 30-60mm we hemi bilou long nomol level. Efri nara aeland bae oli kasem klosap long nomol level.

Maximum and Minimum Temperature Outlook



Slightly above average (0-1°C) day-time temperatures are expected across the country this month.
- *Tempreja blong dei bae wom lelebet bitim nomol wetem wan afarej diffrens blong 0-1°C.*

Slightly above average (0-1°C) night-time temperatures are expected across the country this month.
- *Tempreja blong naet bae wom lelebet bitim nomol wetem wan afarej diffrens blong 0-1°C.*

Tide Outlook for July

Port Vila Harbour					
Lowest Tide	Date	Time (VUT)	Highest Tide	Date	Time (VUT)
0.11m	22 Jul	12:31pm	1.47m	23 Jul	6:25am

Luganville Harbour					
Lowest Tide	Date	Time (VUT)	Highest Tide	Date	Time (VUT)
0.14m	22 Jul	11:45am	1.79m	23 Jul	5:38am

Moon Phases for July

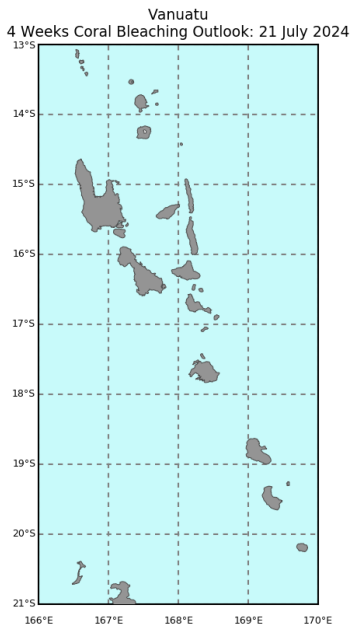
Fes Kwata	Ful Moon	Las Kwata	Niu Moon
14 July	21 July	28 July	6 July

SUPPORTED BY:



Australian Government
Bureau of Meteorology





©Commonwealth of Australia 2024
Australian Bureau of Meteorology, COSPPac

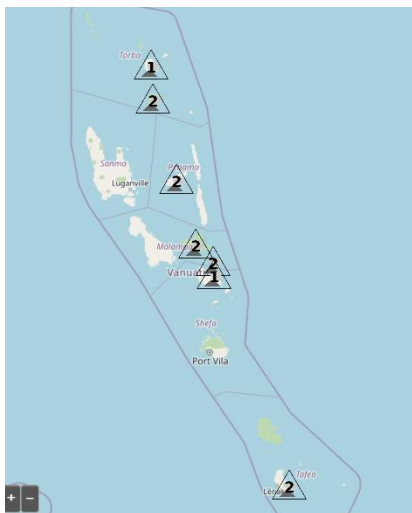
NOAA Coral Reef Watch

Coral Bleaching Outlook

The whole country is at a No Stress level for coral bleaching.

Ful kaontri hemia stap long No Stress level long korel bleaching(hemia saens long ol coral I wik or ded).

Volcanic Alert Level



Vanuatu Volcanic Activity Summary	
Volcanoes	Current Alert Level
Yasur (Tanna)	2
Lopevi (Lopevi)	2
Benbow and Marum (Ambrym)	2
Manaro Voui (Ambae)	2
Mount Garek (Gaua)	2
Suretamatai (Vanua Lava)	1
East Epi	1

Title	Level of Alert
Very Large Eruption	5
Moderate Eruption	4
Minor Eruption	3
Major Unrest	2
Signs of Volcanic Unrest	1
Normal	0

For the latest Volcanic Alert Bulletin, visit:

<https://www.vmgd.gov.vu/vmgd/index.php/geohazards/volcano/volcano-info/current-volcanic-activity>

Bulletin Highlights for July 2024

ENSO:	La Niña Watch	Max Temp:	↑
SST:	↑	Min Temp:	↑
Rainfall:	–	Coral Bleaching:	↓
Sea Level:	–	Volcanos:	–

SUPPORTED BY:



Fisheries Department of Vanuatu



Australian Government
Bureau of Meteorology



SPREP
Secretariat of the Pacific Regional
Environment Programme



GREEN
CLIMATE
FUND

		<i>Recommended Actions</i>		
		Tourism Operators	Tourists	
	R a i n f a l l	<i>Below normal</i>	<p>Use water wisely (e.g., watering lawn/ gardens during cool morning/ evening hours)</p> <p>Provide tourists with resource on water saving behaviour</p> <p>Heavily mulch flower beds to reduce evaporation</p> <p>Desalination plants</p> <p>Avoid use of fire</p>	<p>Use water wisely (use water taps responsibly, reduce shower times)</p> <p>Travel with reusable water bottle and filter</p> <p>Support eco-tourism initiatives with a water conservation focus</p> <p>Participate in activities with less reliance on water (e.g., go bush hiking instead of swimming)</p>
		<i>Above normal</i>	<p>Save enough water for consumption</p> <p>Increase water activities</p> <p>Increase shelter to accommodate rain day activities</p>	<p>Participate in indoor activities</p> <p>Participate in water-based activities</p>
C l i m a t e V a r i a b l e	T e m p e r a t u r e	<i>Above normal</i>	<p>Build low huts near beaches to cool off</p> <p>Encourage sun safe behaviour for tourists (sunscreen, staying in shade, etc.)</p> <p>Do not remove branches from trees nearby</p> <p>Heavily mulch flower beds</p> <p>Provide shade tents and cooling stations</p> <p>Use structural or mechanical aid (e.g., umbrellas or wind breaks)</p> <p>Avoid areas of unfavourable weather conditions (e.g., move from sun to shade)</p>	<p>Apply SPF30+ sunscreen every 2 hours</p> <p>Adjust outdoor activities to avoid thermal stress</p> <p>Stay in the shade where possible</p> <p>Keep hydrated</p> <p>Reduce excess movement</p> <p>Wear a shirt, hat, and sunglasses</p>
	C o r a l B l e a c h i n g L e v e l	<i>Above normal</i>	<p>Reduce stormwater and fertilizer runoff</p> <p>Avoid using herbicides and pesticides</p> <p>Work with government to move towards renewable energy</p> <p>For operators nearby coral, provide extensive education to tourists on how to avoid damaging coral reefs</p> <p>When anchoring boats, avoid anchoring near places with coral reefs</p> <p>Tour boats to avoid releasing grey-water discharge or other water pollutants that can be damaging to marine environment</p>	<p>Do not litter in the marine environment</p> <p>If participating in snorkelling or other water activities nearby coral reefs, take care to not damage coral reefs by stepping on, hitting, or touching corals</p> <p>Ensure sunscreen you use is safe for marine life</p>

For more info, contact us:

VMGD: Free Toll (116) Telephone (+678 23866) Email (climate@meteo.gov.vu)
Tourism office: Telephone (+678 33400) Email (tourism@vanuatu.gov.vu)

SUPPORTED BY:



Australian Government
Bureau of Meteorology



SPREP
Secretariat of the Pacific Regional
Environment Programme



GREEN
CLIMATE
FUND