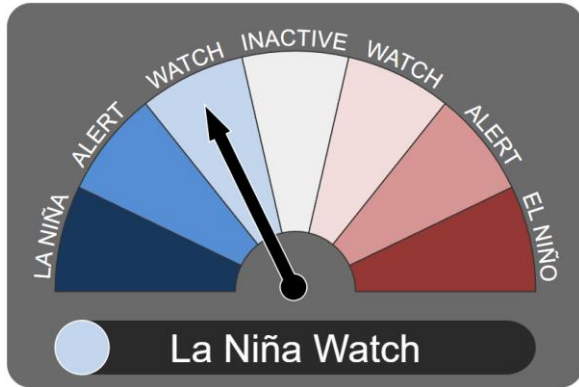


July Climate Bulletin for Fisheries

A monthly bulletin issued by the Vanuatu Meteorology & Geo-hazards Department that provides concise one-month outlook on climatic conditions over Vanuatu that the fisheries sector can use for better decision-making.

El Niño–Southern Oscillation (ENSO)



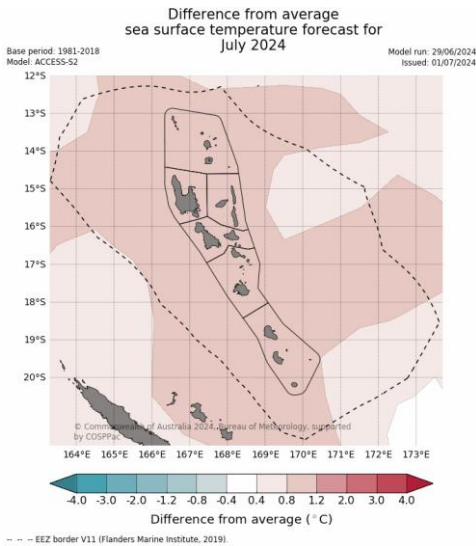
ENSO status is now in La Niña Watch. Indicators are within ENSO-neutral thresholds, but there are signs a La Niña may develop in the following months. Rainfall and temperatures are neither enhanced nor diminished during the Neutral phase.

Stetas blong ENSO naoia hemi stap long La Niña Watch. Ol indiketa blong climate oli soem se ENSO hemi stap long nutrel, be l kat ol signs se wan La Niña bai l fom lo ol manis istap kam. Rainfol mo Tempreja l save ko antap or ko down plante long nutrel taim ya.

Sea Surface Temperature Forecast

Sea surface temperature is expected to be 0.8-1.2°C warmer over the whole country.

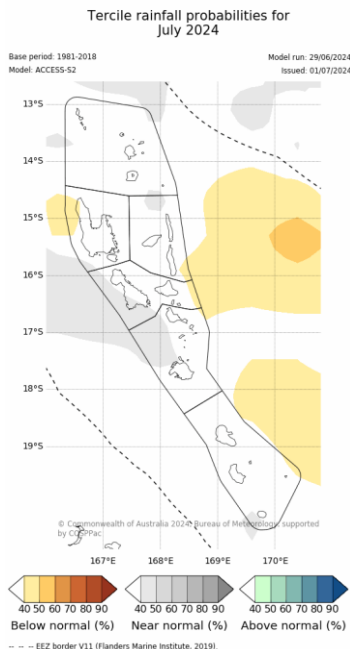
Tempreja blong solwota hemi save kasem 0.8-1.2°C bitim nomol ova long Vanuatu.



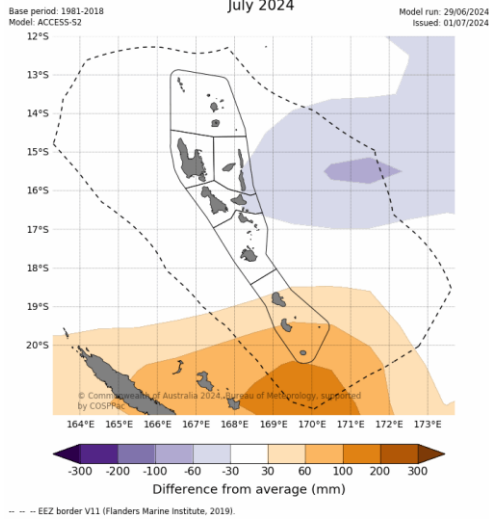
Rainfall Outlook

Rainfall is predicted to be near normal for most of the country.

Renfol bambae hemi save kasem kolosap normal ova long Vanuatu.



Difference from average sea surface height forecast for July 2024

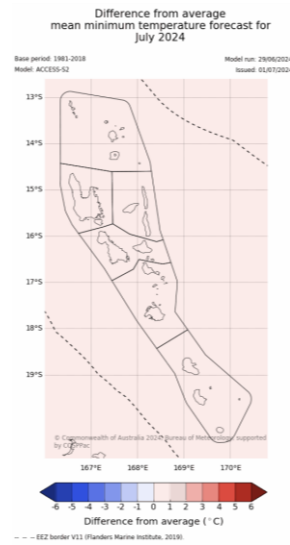
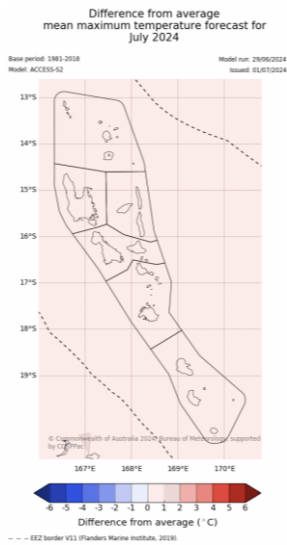


Sea Level Forecast

Tafea province is expected to have 30-100mm higher sea surface heights than normal. Eastern islands of Penama and Malampa provinces are expected to be 30-60mm lower. The rest of the country is forecasted to have normal sea surface heights.

Tafea Profins bambae I save kasem 30-100mm hae solwota bitim nomol. Lo Is pat blo island blong Penama mo Malampa profins, olketa oli save kasem 30 -60 mm bilou nomol level. All narafala pat blo Vanuatu pai oli kasem nomol level blo solwota.

Maximum and Minimum Temperature Outlook



Slightly above average (0-1°C) day-time temperatures are expected across the country this month.

- *Tempreja blong dei bae hemi hae lelepet long afarej wetem wan diffrens blong 0-1°C.*

Slightly above average (0-1°C) night-time temperatures are expected across the country this month.

- *Tempreja blong naet bae hemi hae lelepet long afarej wetem wan diffrens blong 0-1°C.*

Tide Outlook for July

Port Vila Harbour					
Lowest Tide	Date	Time (VUT)	Highest Tide	Date	Time (VUT)
0.11m	22 Jul	12:31pm	1.47m	23 Jul	6:25am

Luganville Harbour					
Lowest Tide	Date	Time (VUT)	Highest Tide	Date	Time (VUT)
0.14m	22 Jul	11:45am	1.79m	23 Jul	5:38am

Moon Phases for July

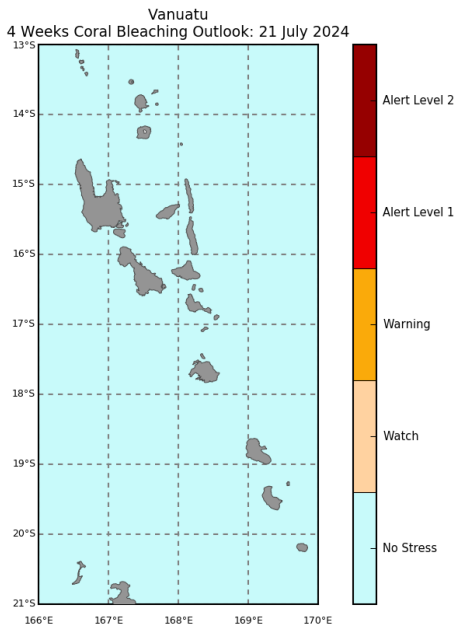
Fes Kwata	Ful Moon	Las Kwata	Niu Moon
14 July	21 July	28 July	6 July

SUPPORTED BY:



Australian Government
Bureau of Meteorology





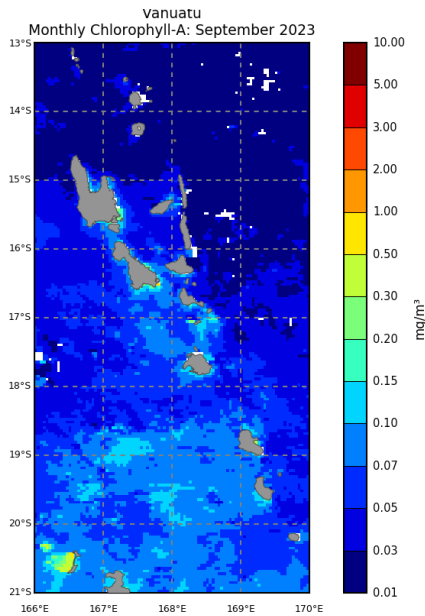
©Commonwealth of Australia 2024
Australian Bureau of Meteorology, COSPPac

NOAA Coral Reef Watch

Coral Bleaching Outlook

The whole country is at a No Stress level for coral bleaching.

Full kaontri I stap long No Stress level blong korel bleaching (saens blong korel I wik or I ded).



©Commonwealth of Australia 2023
Australian Bureau of Meteorology, COSPPac

Chlorophyll-A

Chlorophyll A status from Sep 2023

Chlorophyll concentrations from September were low especially in the northern islands. Pockets of higher concentrations were found at the southern coasts of Espiritu Santo and Malakula, reaching 0.30mg/m³.

Level blong Klorofil lo manis Septemba hemi low long noten aelans. Level blong Klorofil hemi hae (0.30mg/m³) long soaten pat blong Santo aelan mo Malekula.

Bulletin Highlights for July 2024

ENSO:	La Niña Watch	Max Temp:	↑
SST:	↑	Min Temp:	↑
Rainfall:	–	Coral Bleaching:	↓
Sea Level:	–	Chlorophyll:	–

SUPPORTED BY:



Fisheries Department of Vanuatu



Australian Government
Bureau of Meteorology



SPREP
Secretariat of the Pacific Regional
Environment Programme



GREEN
CLIMATE
FUND

Climate Smart Recommendations for Fisheries Sector

			Offshore fisheries	Lagoon fisheries
EL Nino Southern Oscillation (ENSO)	El Nino La Nina			
Sea Surface Temperatures	Further South		- Higher likelihood of warmer water tuna species skipjack and yellow fin. - Fish on warm side of SST fronts for natural biological hotspots.	
Sea Level	> 200 mm < - 200 mm			
Rainfall	Above normal Below normal			
Maximum and Minimum Temperature	Above average Below average			
Coral Bleaching Level	Warning Alert 1 Alert 2			- Reduce storm water and fertilizer runoff - Avoid using herbicides and pesticides - When anchoring boats, avoid anchoring near places with coral reefs - Encourage offshore fishing to alleviate stressors in the lagoon.
Chlorophyll	Above normal		Likely higher stocks for smaller pelagic fish	- Higher risks of lagoon fish disease, encourage offshore fishing - Limit nutrient runoff & monitor for algal blooms - Target high chlorophyll regions for crown of thorns starfish management activities
High and Low Tides	High Tide Low Tide			
Moon Phases	First Quarter Full moon Last Quarter New Moon			

For more info, contact us:

VMGD: Free Toll (116) Telephone (+678 23866) Email (climate@meteo.gov.vu)
Fisheries Department: Telephone (+678 23119) Email (ContactFisheries@vanuatu.gov.vu)

SUPPORTED BY:



Australian Government
Bureau of Meteorology

